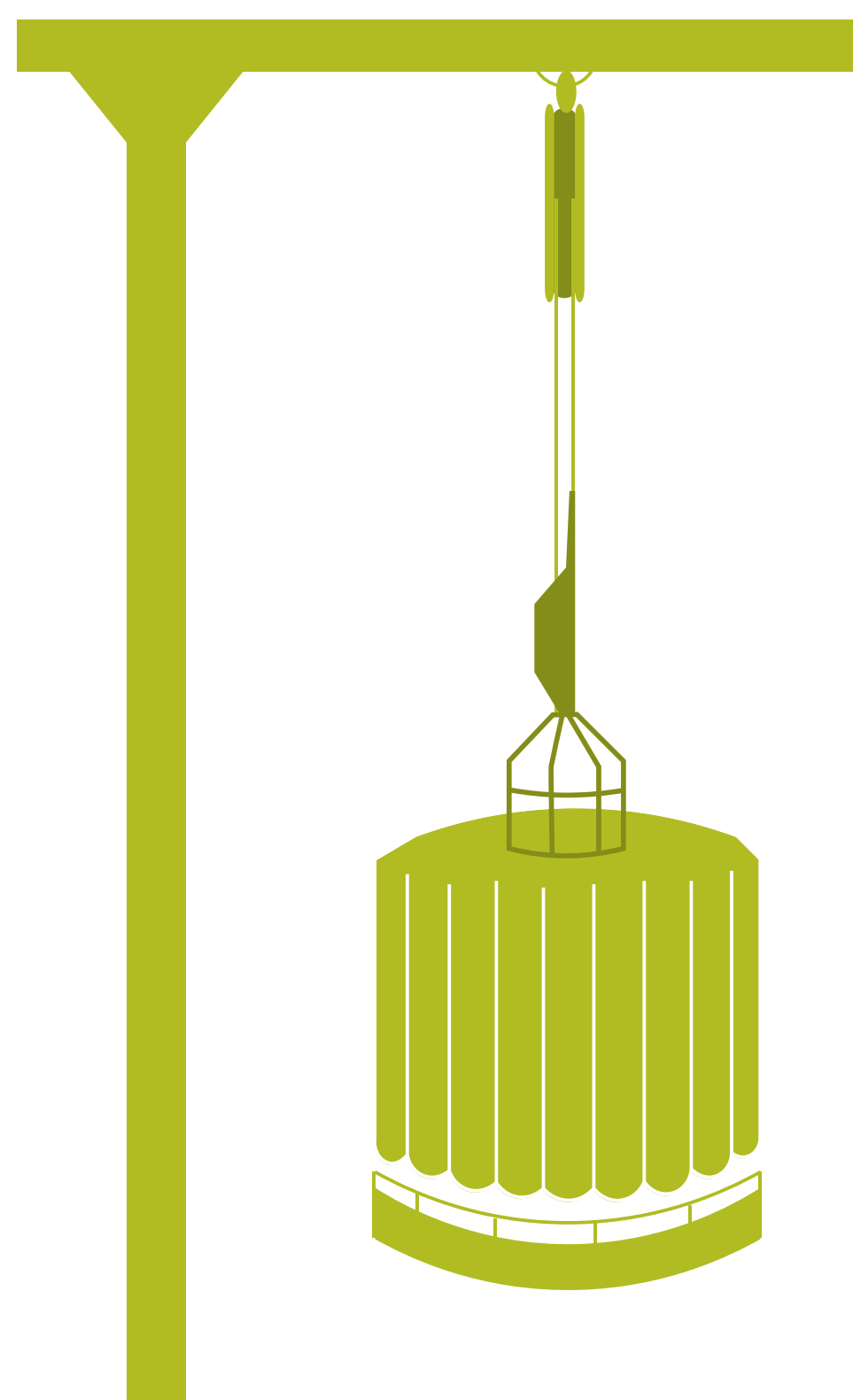


WGMEGS

Working Group on Mackerel and Horse Mackerel Egg Surveys

Ecosystem Observation
Steering Group (EOSG)

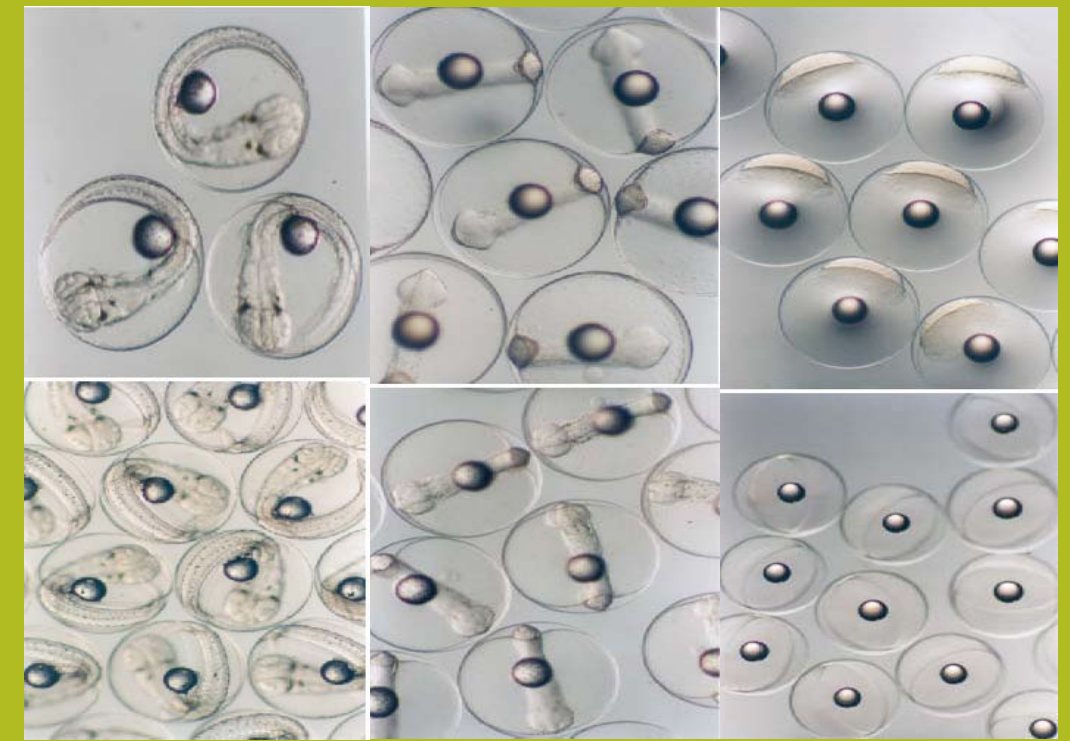


RESEARCH FOCUS

- Planning, executing and reporting on the mackerel and horse mackerel egg surveys in the northeast Atlantic and North Sea.
- Produce a total annual egg production estimate for mackerel and the western stock of horse mackerel.
- Produce a spawning stock biomass estimate for the western and southern components of NEA mackerel and for southern stock of mackerel.
- Provide results to WGWIDE for use in stock assessment.

OUR OBJECTIVE

WGMEGS coordinates the mackerel and horse mackerel egg survey in the Northeast Atlantic and the North Sea, which are carried out every third year. The egg survey provides an important fishery-independent stock indices used in the assessment for Northeast Atlantic mackerel and for the western horse mackerel stocks.



OUR EXPERTISE

- Extensive experience in the organisation and running of ichthyoplankton surveys.
- Extensive experience with adult fish fecundity parameter analysis and calculation.
- Wide variety of skills among group members from multiple institutes in many countries.

OUR CHAIRS



Maria Korta



**Brendan O'
Hea**



Scan the QR code to learn
more about our work